

Rocket Ship Potholder

Designed by Lisa Hannan Fox



Decorate your kitchen with the Rocket Ship Potholder for space flair! Hurling through space, this rocket ship is on its way to explore the universe.

Double knit, the potholder is reversible, with opposite colors on the reverse side. Use color changing yarn for interesting color combinations or solid yarn for a more classic look.

Full instructions are included for the double knitting technique. The finished size is approximately 7 inches by 7 inches (17.8 cm by 17.8 cm).

Disclaimer: This pattern is for creating a decoration only. The knitted item might not protect you from hot items and contact with hot items could melt certain types of yarn. Please use caution.

Materials

- Size 5 US (3.75 mm) needles.
- Size 4 US (3.5 mm) needles (optional for a neater cast on edge).
- Approximately 50 yards (45.7 m) each of two contrasting colors of worsted weight yarn makes one potholder.
- Needle to weave in ends.

Gauge

21 pairs of stitches and 31 rows = 4 inches (10.2 cm) in double knitting

Tip: Work a gauge swatch using double knitting to ensure the correct finished size.

Instructions

Color A = The darker color of yarn. In the sample pictures, **Color A** is blue.

Color B = The lighter color of yarn. In the sample pictures, **Color B** is white.

For all charts, use **Color A** for the black squares and **Color B** for the white squares.

Note: If you are new to double knitting, the **How to Double Knit Charts** section explains how to work the charts using the double knitting technique. There are also many tutorials available online on ravelry.com and elsewhere on the web.

Cast On

Use the smaller needles for casting on, if desired, for a tighter edge. Using **Color A**, cast on 72 stitches using a cable cast on (or 36 pairs of stitches using your preferred double knit cast on method). Note that the chart is only 36 stitches wide, but is double-sided. Casting on double the number of stitches with a firm cast on stitch helps prevent the ends from bulging. Make sure to cast on tightly rather than loosely so that the cast on edge doesn't flare out.

Working the Chart

Switch to the larger needles and work the chart. When finished with the chart, work the bind off below.

Bind Off

The following bind off matches the cable cast on. If you used a different cast on, you may want to use a matching bind off.

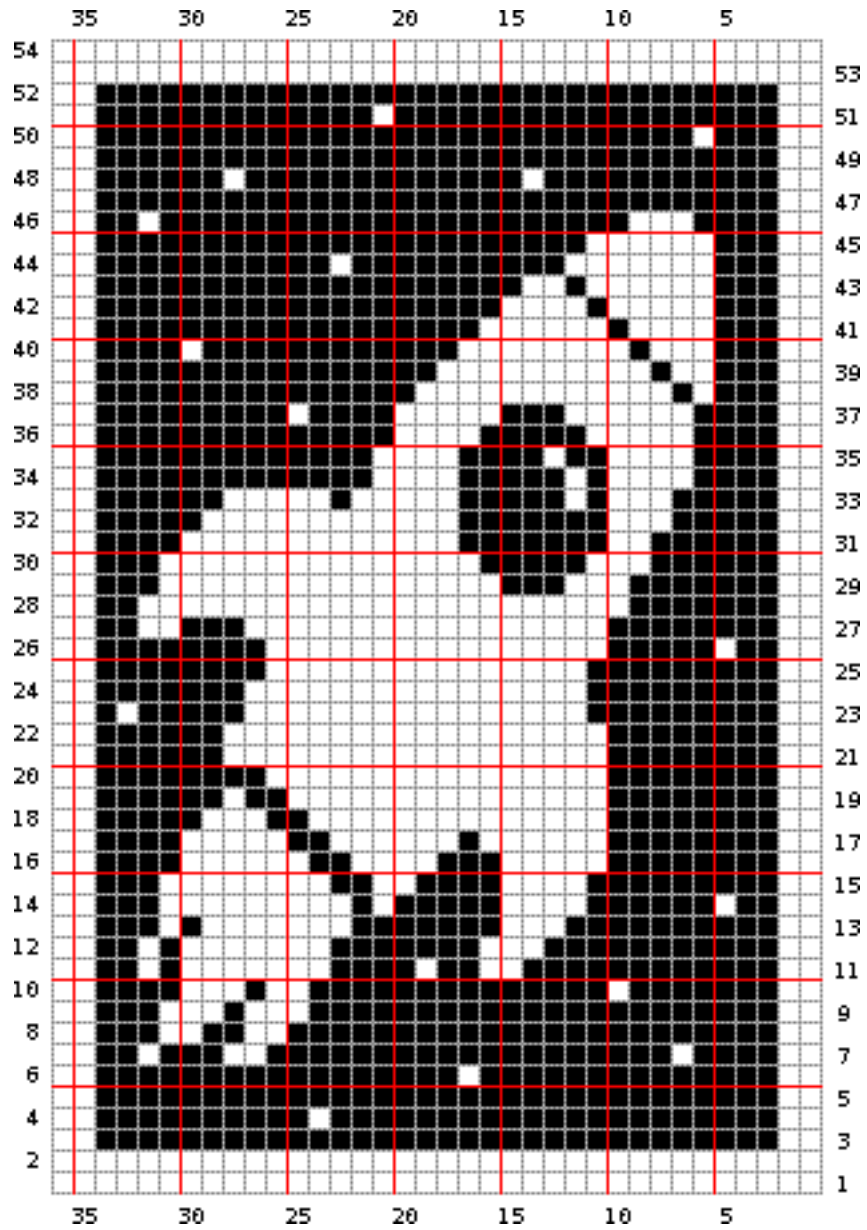
Color B is no longer used. Cut off **Color B**, leaving a tail for weaving in the end. Before binding off using this method, work one row using **Color A** for both the knit and the purl stitches.

Bind off using **Color A** as follows (or your preferred double knit bind off method):

1. K1, P1, K1, pass the first stitch on the right needle over the other two.
2. *P1, pass the first stitch on the right needle over the other two, K1, pass the first stitch on the right needle over the other two. Repeat from * until all stitches on the left needle have been processed and 2 stitches remain on the right needle.
3. Pass the first stitch over the second, cut yarn with a long tail and pull the tail through the last stitch to secure.

Weave in the ends and enjoy your new potholder!

Chart



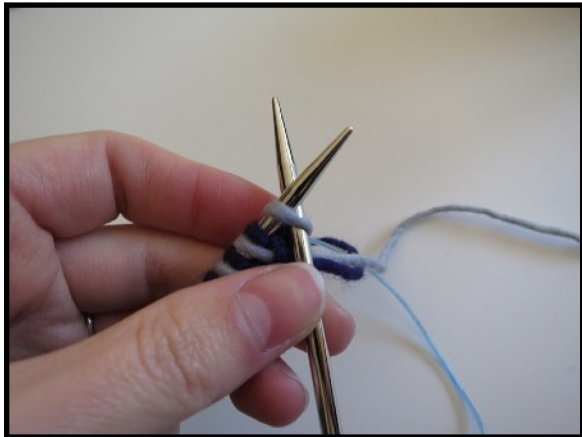
How to Double Knit Charts

When double knitting a chart, one color yarn is assigned to the white squares and the other is assigned to the black squares. In these instructions, the black squares are **Color A** and the white squares are **Color B**. Each square represents a pair of stitches, one knit and one purl. As you work, the knit stitches form one side of the work and the purl stitches form the other side of the work.

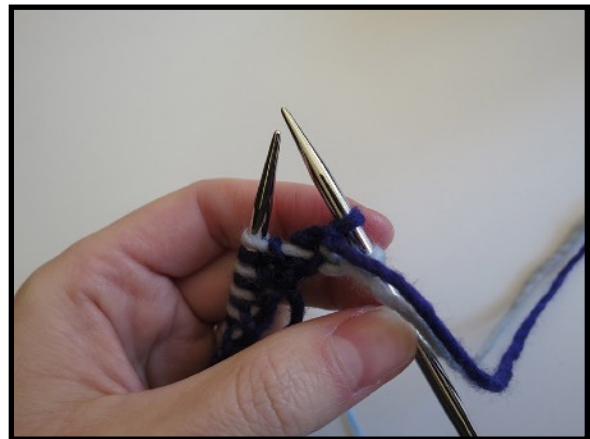
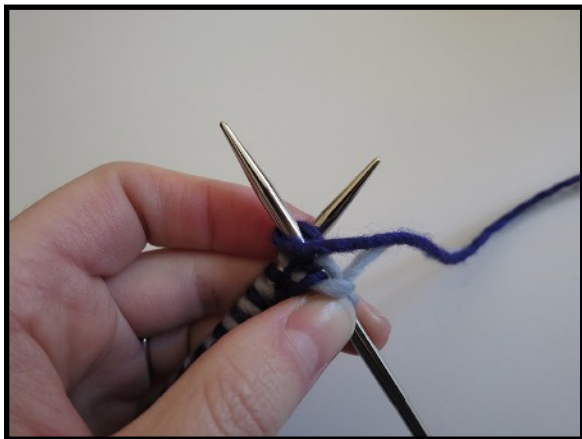
Note that in the pictures, **Color A** is purple and **Color B** is grey. The pictures are for demonstration purposes only.

When you encounter a **white square** on the **front side (odd rows)** of your work, do the following:

1. With both working yarns in back, knit the next stitch with **Color B**.



2. Bring both working yarns to the front and purl the next stitch with **Color A**.
3. Bring both working yarns to the back again and continue with the next square.



When you encounter a **black square** on the **front side (odd rows)** of your work, do the same thing with the colors swapped:

1. With both working yarns in back, knit the next stitch with **Color A**.
2. Bring both working yarns to the front and purl the next stitch with **Color B**.
3. Bring both working yarns to the back again and continue with the next square.

A black square on a white background will form a stitch that has the opposite color from the other squares.



On the **back side (even rows)** of the work, the colors are reversed. For a **white square**, knit with **Color A** and purl with **Color B**. For a **black square**, knit with **Color B** and purl with **Color A**.



At the edge of the work, make sure to twist the two yarns together before starting the next row. This ensures that the two sides are connected. However, don't twist the yarns in the middle of the row when the colors are not changing (such as large solid sections), as this can cause unusual pulling of the stitches.

